

ANNOUNCEMENT:

PAN-CARIBE

CARIBBEAN BASIN GEOPHYSICAL PROGRAM



For start in Q3 2015 GWL invites participation in the Pan-Caribe Program.

For regional mapping of the geology of this entire region we will acquire long offset reflection seismic, refraction, gravity and magnetic data. Permits have been obtained for a program of 21,900 km, expandable to 40,000 km.

Reflection seismic acquisition parameters will be:

Source:	6,000 cu.in, > 120 bar-m
Streamer:	10,200m
Recording:	50m pop, 18 sec records

Deliverables will include PSTM and PSDM SEG-Y and interpretation products.

The project area covers the Caribbean Sea in the economic zones of the following countries: Colombia, Venezuela, Panama, Costa Rica, Nicaragua, Honduras, Belize, Cuba, Cayman Islands, Jamaica, Commonwealth of the Bahamas, the Turks and Caicos Islands, Haiti, Dominican Republic, Puerto Rico, British Virgin Islands, United States Virgin Islands, Anguilla, Saint Kitts and Nevis, Montserrat, Guadeloupe, Martinique, Saint Vincent and the Grenadines, Trinidad and Tobago, Aruba and Curacao area.

Planned start Q3-15 in the south western Program region offshore Colombia, Venezuela, Aruba, Guyana.



GEOLOGY
WITHOUT LIMITS

Regional seismic beyond
the current understanding
of marine basins

In many of the world's challenging frontier exploration settings, political borders form practical limitations to proper assessments of the geology and hydrocarbon potential. Petroleum systems do not follow state boundaries but are truly international in nature.

Geology Without Limits (GWL) represents a unique solution to this problem. We design and execute Marine Scientific Exploration Programs.

The programs are permitted in cooperation with National Scientific institutes and conducted with support of the governments of the countries involved. National institutes benefit from data being acquired in their EEZs, but have no ownership or distribution rights.

Marine Geological Affair Institute LLP, UK (MGAI) is the company responsible for the GWL operations and holder of the exclusive rights to the Program results.

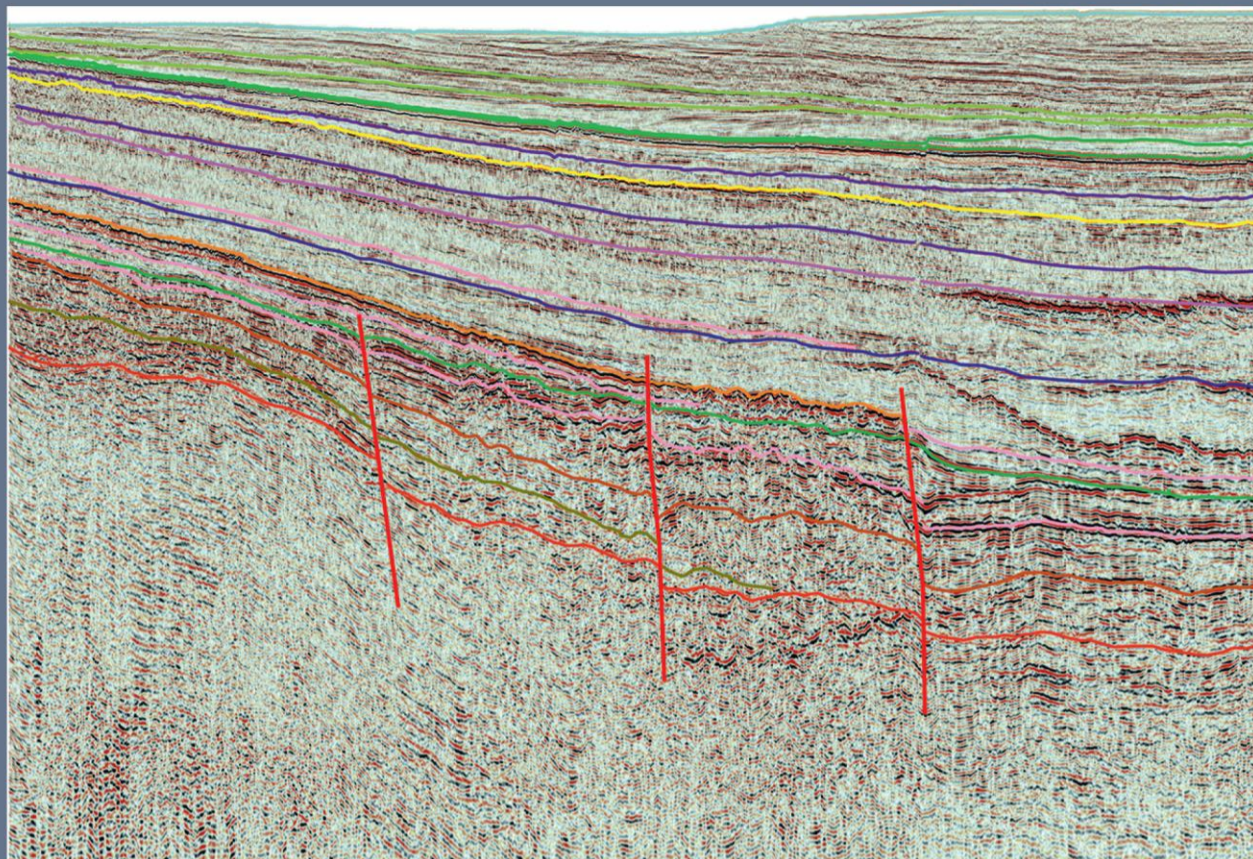
The geophysical and geological results of the Program can be licensed by exploration companies from MGAI on normal industrial terms and conditions.

company@gwl-geo.com
www.gwl-geo.com

DATA > KNOWLEDGE > UNDERSTANDING > SUCCESS

PAN-CARIBE

CARIBBEAN BASIN GEOPHYSICAL PROGRAM



The objectives of this Program are as follows:

Understand the regional geology of the Caribbean – Bahamas basins so that oil and gas exploration can be more successfully targeted and be successful:

- Reveal the major elements of the Earth's crustal architecture.
- Map on a regional scale the basin geometries and unlock their histories in order to understand active petroleum systems.
- Provide high quality deep depth imaged exploration seismic data integrated with gravity and refraction data
- Provide new insights into the evolutionary model of this region

Program participants will have the opportunity to provide technical input and influence the Program priorities as well as get access to results as they become processed and available.

For more information on this Program, please contact:

Nikolay Amelin: amelin@gwl-geo.com or
Glyn Roberts: gfr@specpartners.net

Spec Partners Ltd. are marketing the Pan-Caribe



GEOLOGY
WITHOUT LIMITS

Regional seismic beyond
the current understanding
of marine basins

Geology Without Limits (GWL) Programs are based on co-operation with scientific institutes in the countries of operation. These Institutes as well as the world's scientific community have a good knowledge and understanding about the nature of the world's basins. This cooperation in combination with the most modern techniques characterize GWL's Programs.

GWL has past experience of carrying out such Programs in the Arctic seas as well as the Black Sea. Programs in progress include the Caspian Sea and the East Mediterranean Sea as well as the Caribbean Sea.

Local participating Institutes will receive limited access to the result of the program for the purposes of academic and educational use only.

In inviting the petroleum industry to participate, we want to progress the geological knowledge and understanding based on all the existing information about the region, its current structural and evolution models.

Improved understanding can lead to better exploration models and greater exploration success.

company@gwl-geo.com
www.gwl-geo.com